



Turn energy into motion  
from 1888

**RER produces energy-efficient and  
uncompromisingly reliable solutions for electric  
vehicles with care for people's health and safety**





# RER

69900 sqm

Total area



In numbers

75

Years of experience

700

Employees

50000

Motors

2050

Completed train sets





# RER Values

## **TRADITIONS**

We take pride in our rich history and achievements of our enterprise, which serve as a foundation for our production traditions

## **CUSTOMER FOCUS**

Our customers' goals and objectives are our top priority. RER exerts its efforts to manufacture reliable high-quality products to meet any needs and expectations.

## **DEVELOPMENT**

Technological development and the ability to enter new market segments are major components of the business approach employed by RER.







# Why RER

**RER JSC is the largest manufacturer of traction drives and comprehensive solutions for electric transport in the Baltic States.**

## **Uncompromising quality**

We supply the customer only with tested equipment our team is firmly confident in. It allows our products to comply with the requirements, saving time and minimizing the possibility of error.

## **Affordable Price**

We supply the customer only with tested equipment our team is firmly confident in. It allows our products to comply with the requirements, saving time and minimizing the possibility of error.

## **Full cycle**

We supply the customer only with tested equipment our team is firmly confident in. It allows our products to comply with the requirements, saving time and minimizing the possibility of error.







# Why RER

## **Savings on logistics**

Well-established communication by trucks and trains allows us to reduce the cost of delivering our products to European assembly factories and guarantee that the customer always receives the whole order on time.

## **Excellent support**

We provide services and consultations, conduct training on equipment installation, help in the commissioning process, and provide timely maintenance.

Such support:

- Speeds up commissioning
- Guarantees 100% quality control and compliance with safety regulations at all stages
- Protects our clients' businesses against possible risks
- Saves the company money on repairs.





# All your business needs in one place

## **MANUFACTURING:**

- Electrical Equipment For Trains
- Electrical Equipment For Passenger Cars
- Electrical Equipment For The Subway
- Urban Transport
- Charging Stations For Electric Bus Transport
- Renewable Energy Equipment

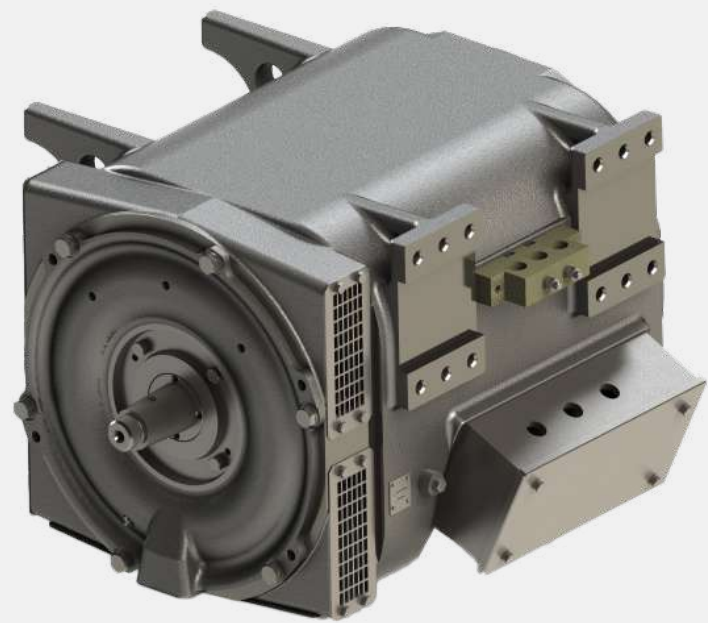
## **SERVICES:**

- Metalworking
- Foundry Services
- Impregnation And Winding Works
- Laboratory Research
- Repairs
- SMD (Surface Mount Device)





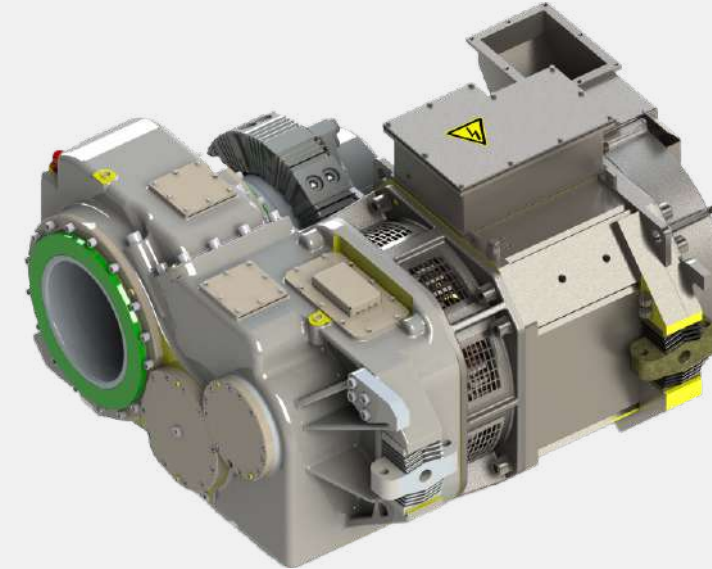
# All your business needs in one place



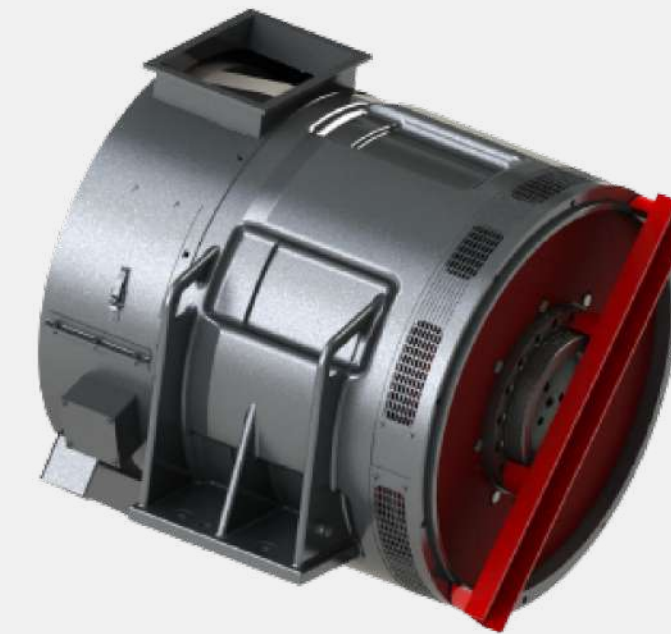
**AC TRACTION MOTORS**  
100 - 1000 kW Nominal voltage



**DC TRACTION MOTORS**  
100 - 500 kW Nominal voltage



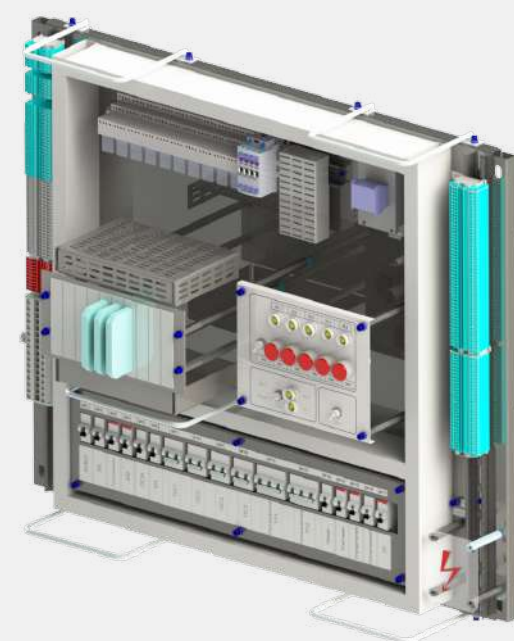
**AC MOTOR GEAR UNITS**  
AC Motor gear units for 3kVDC, 600DC



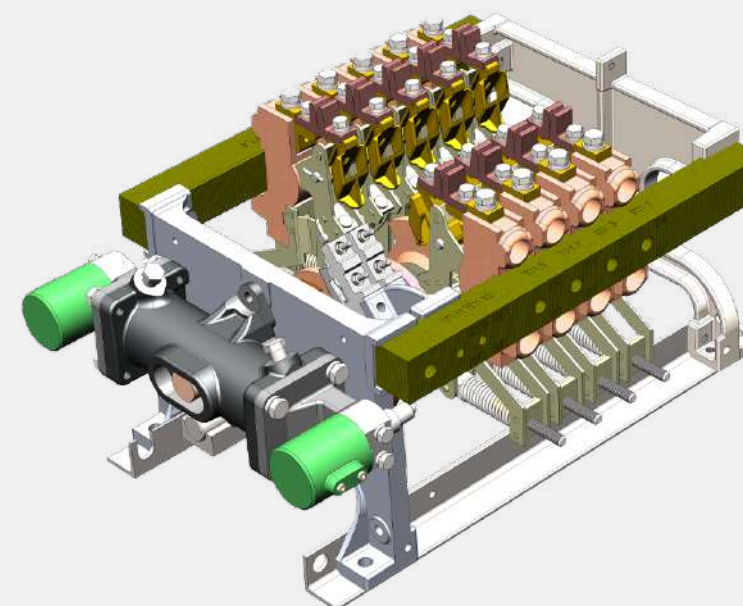
**ALTERNATORS**  
Auxiliary and traction alternators



**CONVERTERS (INVERTERS)**  
Auxiliary, network, autonomous converters



**PANELS**  
Auxiliary, traction and braking system control panels



**CONTROLLERS**  
Power, braking controllers, reversers



**CONTROL BOXES**  
Stepper motor control and alternator power supply units



All your business needs in one place

## **CONTACTORS**

Line and safety, auxiliary contactors

## **RESISTANCE UNITS**

Start an braking resistance blocks for EMU

## **TRANSFORMERS**

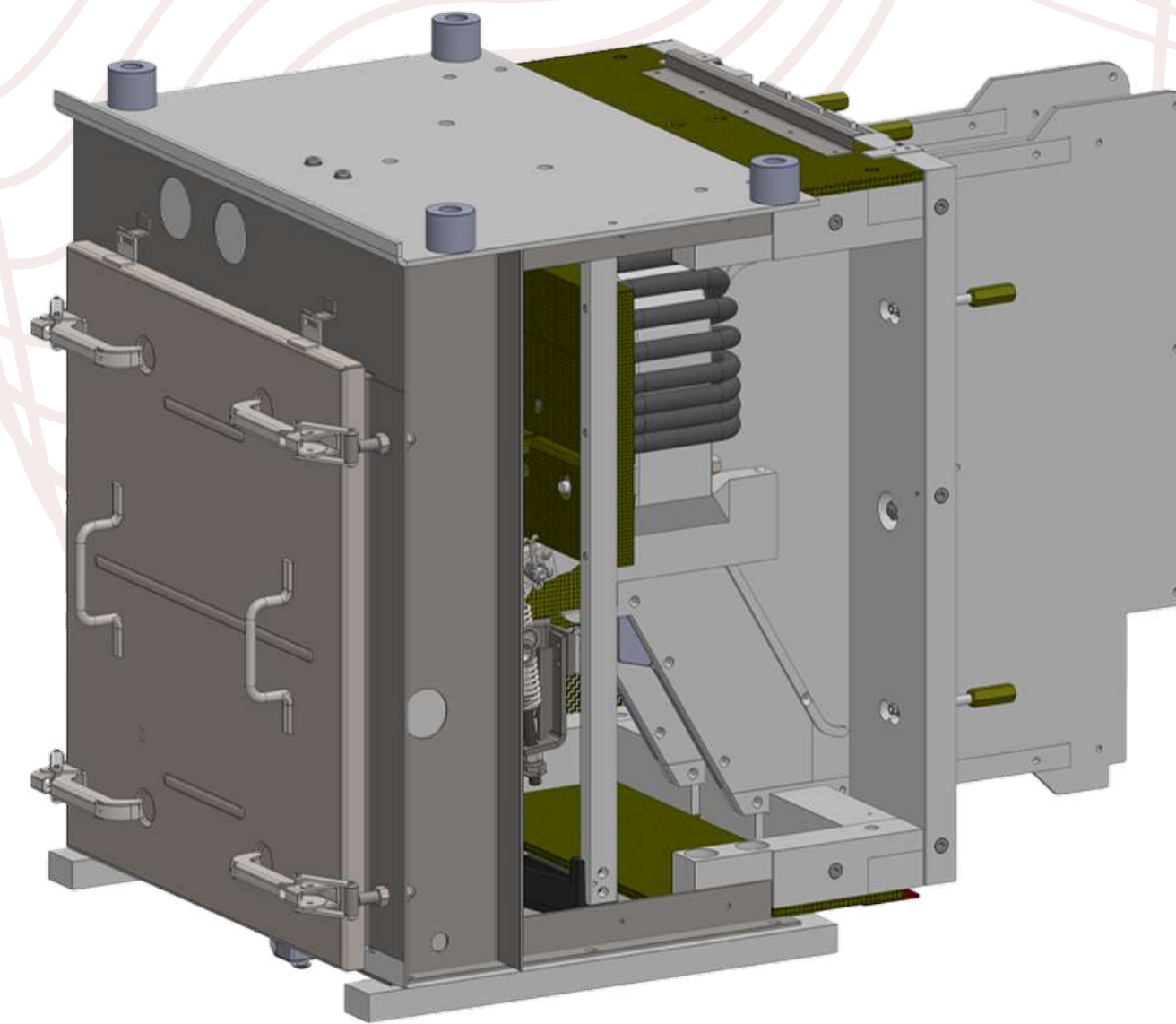
3-phase transformer for onboard power circuit

## **INDUCTORS AND CHOKES**

EMC, short circuit current limitation chokes

## **HV DISCONNECTORS**

High voltage disconnectors



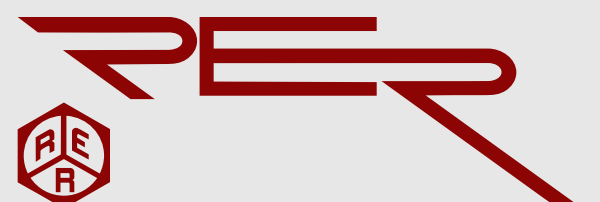


# RER Quality Of Operations

Our integrated management system is certified to ISO 9001:2015.

The implemented standards and procedures ensure efficient operation of all processes.

**JSC RER** performs welding according to the requirements of the European EN 15085-2 standard (Certificate ZE-16083-01-00-EN15085-2020.0118.004, certification level CL 2) and is ready to fulfill orders of any complexity.





# RER Production and Technology Facilities

- 1** Parts and components machine
- 2** Winding and blank production
- 3** Blank production works for processing
- 4** Tool shop for the manufacturing of production tooling and special tools
- 5** Foundry
- 6** Quality control
- 7** Painting parts and components
- 8** Welding and stamping shop and the heat treatment plant



# RER Various Methods of Metal Processing

CNC Turning

CNC Laser Cutting

CNC Punching

CNC Milling

SMD manufacturing

Aluminum die casting

Impregnation and winding works

Foundry services





# RER Technical Capabilities in Product Lines

## **COMMUNAL VEHICLE MOTORS**

Electric trolleybus motors with power ratings of 105 to 250 kW.

## **SUBWAY CAR MOTORS**

Electric traction motors with power ratings of 220 to 450 kW.

## **RAILCAR MOTORS**

Electric traction motors for direct-current trains, alternate-current trains and direct current trains with an asynchronous electric drive of nominal capacity between 220 kW and 850 kW.

## **ELECTRICAL EQUIPMENT**

Underflow auxillary equipment

## **TRACTION EQUIPMENT**

3 kV, 25 kV

## **AUXILLARY/TRACTION GENERATORS**

Generatorsl voltage from 50 to 800kW





COUNTRY	COMPANY NAME	TYPE OF EQUIPMENT
Switzerland	ABB Schweiz AG	Converters for railway trains
Czech Republic	Wikov Industry a.s. AC motor (380 kW) TRAM FOR ENVI s.r.o.	AC motor (380 kW) AC motor (180 kW) for trolleybus
Austria	Traktionssysteme Austria GmbH	Repairing of AC motors (500+ units)
Poland	H. Cegielski – Fabryka Pojazdów Szynowych Sp. z o.o. Pesa Bydgoszcz SA	Autonomous electrical equipment set for passenger cars (control panel, undercar electrical equipment boxes, induction generator)
Germany	Schaltbau GmbH	Contactors for railway trains
Mongolia	Ulaanbaatar Railway JVC	Autonomous electrical equipment set for passenger cars (control panel, undercar electrical equipment boxes, induction generator). The producer of passenger cars - TVZ JSC (Russia)
Slovakia	ZOS TRADING s.r.o.	Autonomous electrical equipment set for passenger cars (control panel, undercar electrical equipment boxes, induction generator)
Uzbekistan	Tashkent plant for the construction and repair of passenger wagons JSC	Complete propulsion system sets with motors for metro trains
Ukraine	"Bogdan Motors" JSC Trading House LITAN LLC POLYTECHNOSERVICE LLC Chernigov Automobile Plant LLC	AC motors (180 kW, 125 kW) and converter for trolleybus AC motor (180 kW) for trolleybus  Complete propulsion system sets with motors for electrical trains
Russia	Demmikhovo Machinebuilding Plant JSC Tver Carrige Works JSC	Complete propulsion system sets with gear - motors for electrical trains, autonomous electrical equipment set for passenger cars (control panel, undercar electrical equipment boxes, induction generator)
Republic of Belarus	Unitary Enterprice Belzheldorsnab of Belarusian Railway	Production of electrical equipment trains





**FOR MORE INFORMATION,  
FEEL FREE TO CONTACT US**

**Thank you!**

