

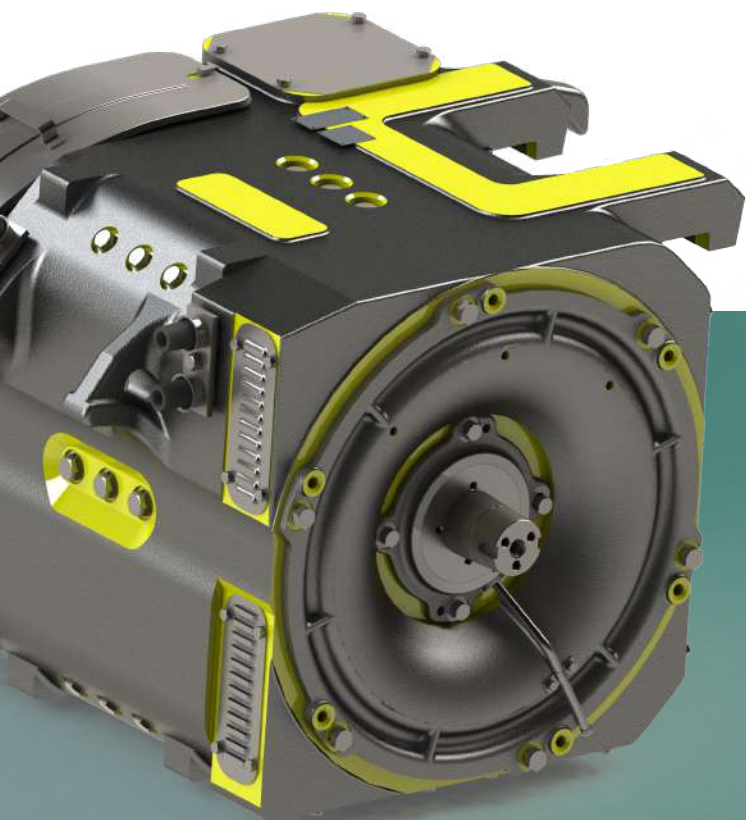


Electric motors **Catalog**

Our portfolio begins with electric equipment from the earliest origins of electric propulsion and continues with brand new products adapted to the developing trends in the industry.

WWW.RER.LV

RER is a competent business partner that undertakes the production, re-engineering or retrofitting, of train traction motors and other electric equipment. We develop custom-made drive systems to enhance your vehicles with powerful facilities.



Variety of implementations

Advantages of electric facilities produced by RER:

- ▶ 100% individual solutions
- ▶ Low operating costs
- ▶ High performance

RER offers integrated system solutions for high-quality facilities using commutators and asynchronous electric motors. Individual drive concepts are developed for each specific project to maximize its efficiency and performance.

1TM.001 U1 (DC)

Nominal power, kW	380
Nominal voltage, V	1500
Nominal current, A	295
Revolutions per minute	620

1TM.004.5 U2 (DC)

Nominal power, kW	420
Nominal voltage, V	1500
Nominal current, A	347
Revolutions per minute	592

1TM.004.1 U2 (DC)

Nominal power, kW	440
Nominal voltage, V	1500
Nominal current, A	347
Revolutions per minute	590

Electric Drive for Progress towards the Future

Our work is backed by vast experience in the design of electric traction motors.

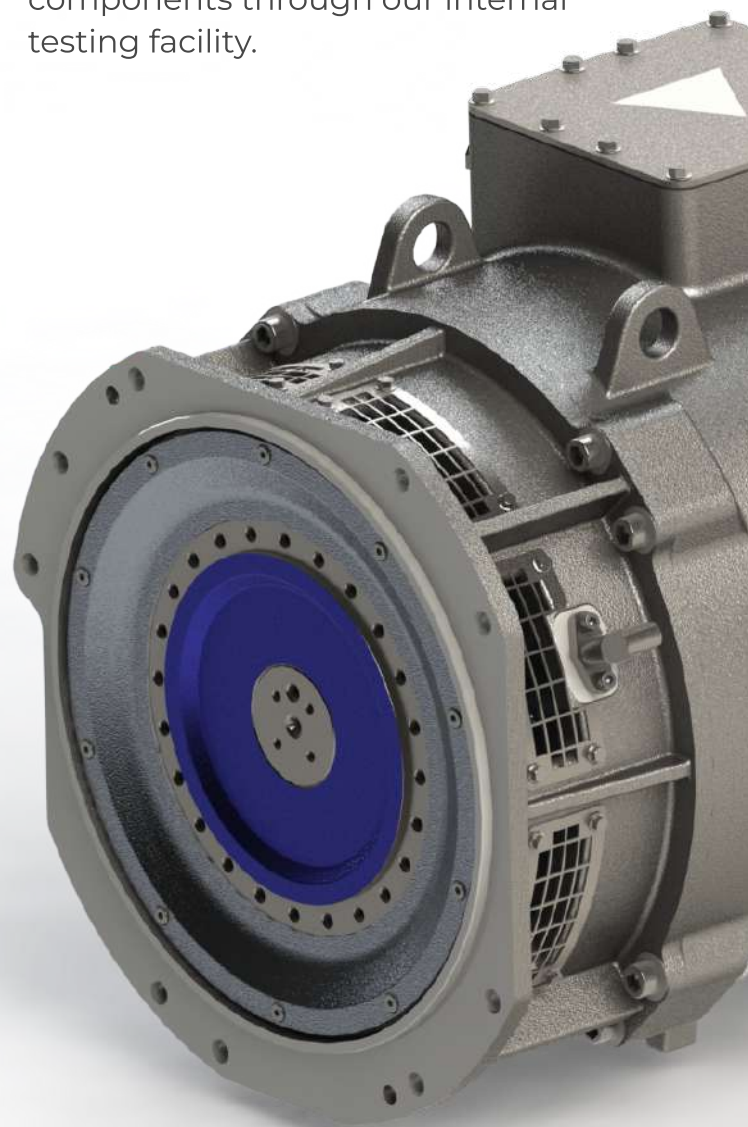
RER experts ensure excellent quality and longevity by running 100% of components through our internal testing facility.

1DT.003.8 (DC)

Nominal power, kW	240
Nominal voltage, V	750
Nominal current, A	350
Revolutions per minute	1240

1DT.003.11 (DC)

Nominal power, kW	220
Nominal voltage, V	825
Nominal current, A	285
Revolutions per minute	870



Thanks to the features of individually designed electrical kits, the operation of facilities is controlled smoothly and at a high level of safety.

Continuous research, combined with reliable equipment and decades of experience, demonstrates that our customers receive both state-of-the-art and proven solutions.

1DT.17K U1 (DC)

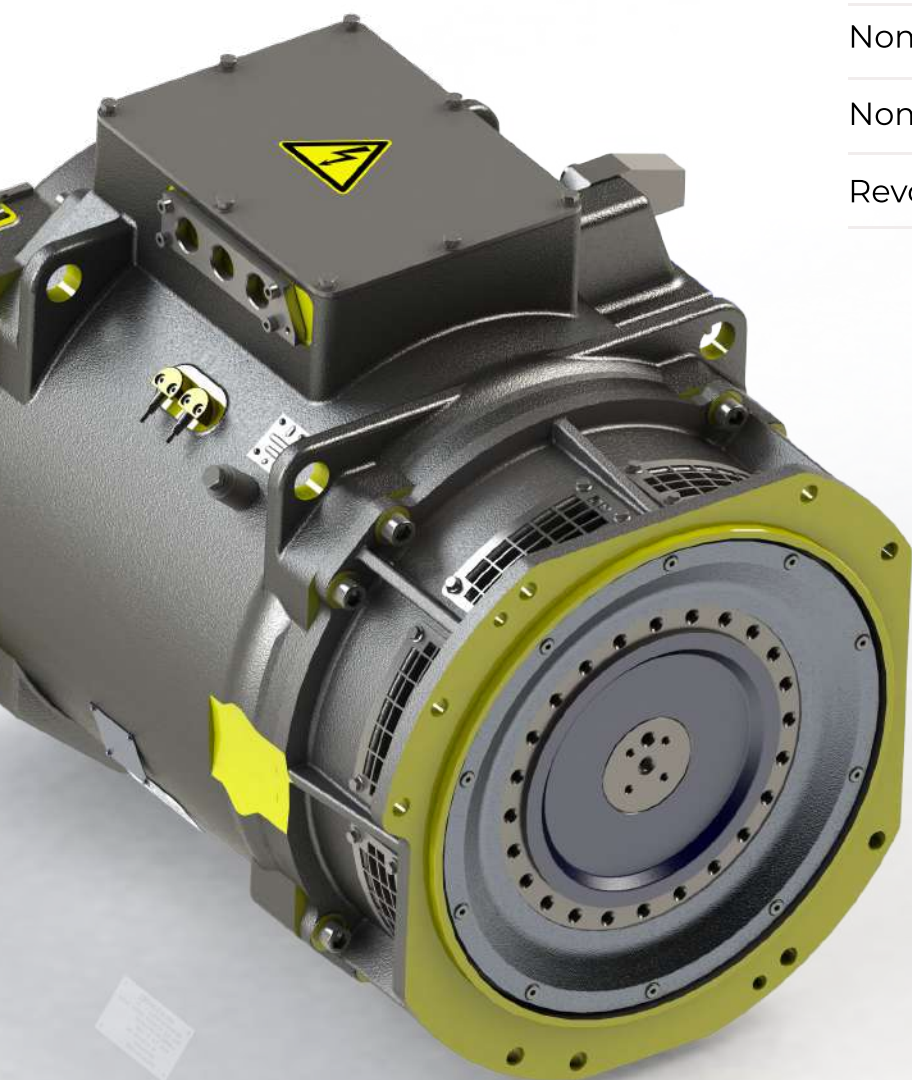
Nominal power, kW	250
Nominal voltage, V	1500
Nominal current, A	184
Revolutions per minute	780

1DTA.001 U1 (AC)

Nominal power, kW	480
Nominal voltage, V	2340
Nominal current, A	141
Revolutions per minute	1100

1DTA.002.1 U1 (AC)

Nominal power, kW	300
Nominal voltage, V	2340
Nominal current, A	90
Revolutions per minute	2363



5DTA.001 U2 (AC)

Nominal power, kW	180
Nominal voltage, V	530
Nominal current, A	242
Revolutions per minute	1480

DTA.380 U1 (AC)

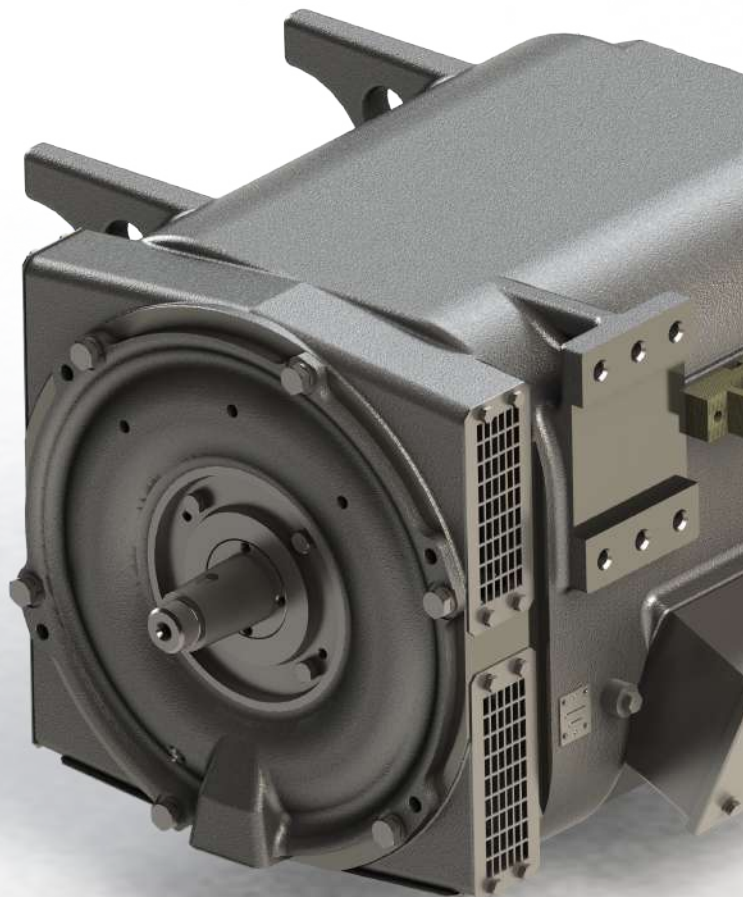
Nominal power, kW	380
Nominal voltage, V	2200
Nominal current, A	121
Revolutions per minute	2036

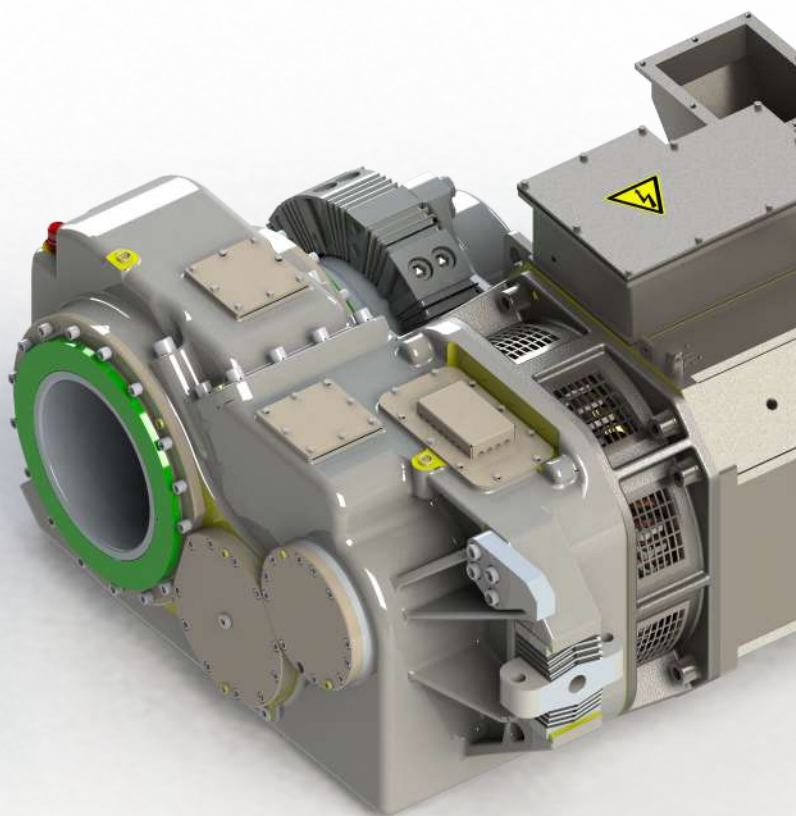
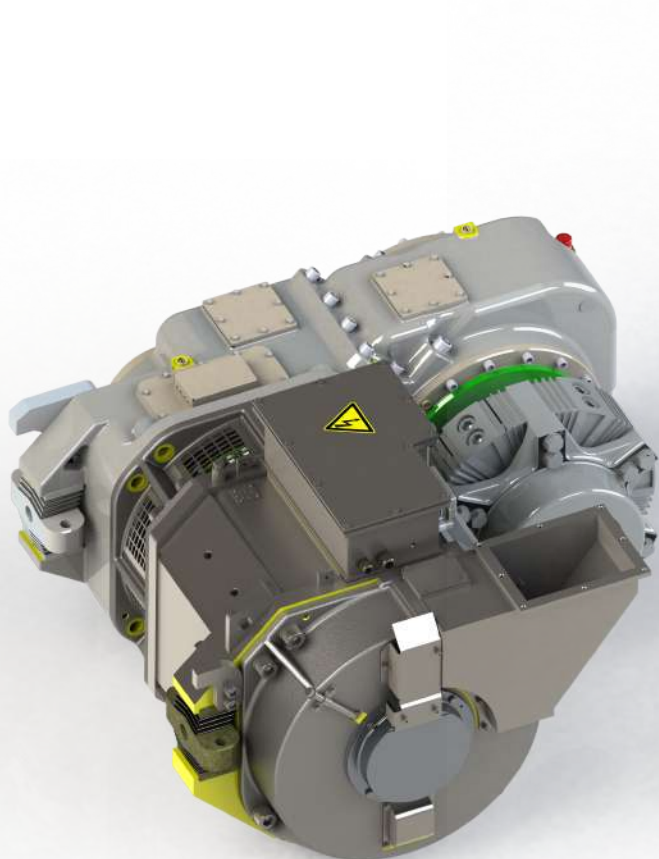
DTA.170 U2 (AC)

Nominal power, kW	170
Nominal voltage, V	530
Nominal current, A	234
Revolutions per minute	1290

TAD.350. 1-6 UHL2 (AC)

Nominal power, kW	350
Nominal voltage, V	660
Nominal current, A	377
Revolutions per minute	600





1MGU.002 U1

Nominal power, kW	180
Nominal voltage, V	1x1800
Nominal current, A	59
Mass KG	1580
Ins. class	220
Maximal rotation speed	4650 min ⁻¹
Gear ratio	5,255

1MRB.001 U1

Gear ratio	6,59
Maximum torque, Nm	2702
Max. input shaft speed, RPM	4774
Max. speed of rolling stock, km/h	120

Tram, trolleybus and electric bus motors

4DTA.001 U1 (AC)

Nominal power, kW	105
Nominal voltage, V	430
Nominal current, A	178.1
Revolutions per minute	1773

6DTA.002.1 U2 (AC)

Nominal power, kW	180
Nominal voltage, V	420
Nominal current, A	310
Revolutions per minute	1470

6DTA.002.2 U2 (AC)

Nominal power, kW	180
Nominal voltage, V	370
Nominal current, A	343
Revolutions per minute	1477



6DTA.001 U2 (AC)

Nominal power, kW	125
Nominal voltage, V	370
Nominal current, A	241
Revolutions per minute	1474

Choose RER for quick and efficient custom services that cover your business needs.

We collaborate with both local companies in the Latvian market and international manufacturers to deliver profitable solutions that meet your unique requirements. Contact us to discuss your request for equipment today.

2GV.13 U1 (AC)

Nominal power, kW	180
Nominal voltage, V	420
Nominal current, A	310
Revolutions per minute	1470

7GST.002 UXL2 (AC)

Nominal power, kW	750
Nominal voltage, V	750
Nominal current, A	343
Revolutions per minute	1900

Our customers' goals and objectives are our top priority. **RER** exerts its efforts to manufacture reliable high-quality products to meet any needs and expectations.

We strive to maintain long-term relations with our customers, supporting their business on the way to success.

Rīgas elektromašīnbūves
rūpnīca

Ganību dambis 53, Rīga,
LV-1005, Latvia

Phone +371 67 381 193

Fax +371 67 046 959

WWW.RER.LV

e-mail: office@rer.lv